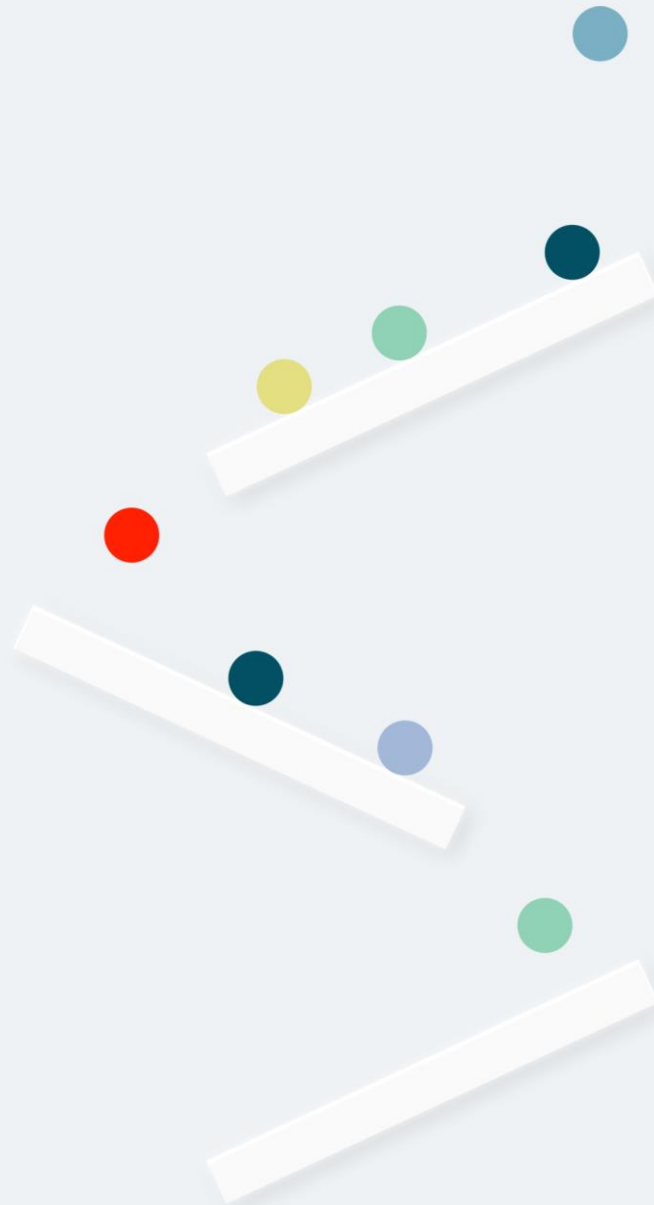


Eagle Software

Download Prerequisite

Check Instructions

Release 32



EPICOR

Prerequisites

- ✓ [EOS3 \(Eagle Operating System 3\)](#)
- ✓ [Windows 7 Professional or Enterprise, 32bit or 64bit or higher](#)
Windows XP, Windows Vista, Windows Server 2003 and 2008 are not supported.
- ✓ [Eagle is on Release 26.0](#)
This includes client PCO 26.0856.046, 26.0856.110 and server 38.0937.029. Other client versions are suitable as long as they are compatible with 38.0937.029 server version. The About Eagle box in eBrowser contains this software version information.
- ✓ [Net Vista Bed Check](#) -- This is the automatic process to deliver patches and software update notices from the Epicor cloud. Although, you should probably already be set up for this, the initial ECD process checks to be sure. If for some reason it is not set up, Epicor will work with you to get this set up and working.
 - **Note:** If you are using dialup, ECD is not supported.
- ✓ [eConnect 3 or eConnect 4 is installed on each PC.](#)
- ✓ [ECD Overview Training for Eagle Software Download is complete.](#)
- ✓ [All client PC's must be turned on and connected to the network.](#)
- ✓ [Security bit 91 "Access to Osprey" – this bit is necessary to use function ECD which is run from OSPREY.](#)

How to verify EOS3

1. Open Secure Access or Network Access
2. Type PCO
3. EOS3 – OS: 22.XXXX

```
SYSTEM SOFTWARE PCO's
Programs: 39.0818.057
OS: 22.0782
eosbin: 22.0765
master: 22.0781
mpatch: 22.0781
```

a.

4. EOS2 – 21.XXXX

```
Show PCO Level

SYSTEM SOFTWARE PCO's
Programs: 39.0676.016
OS: 21.0671
eosbin: 21.0671
master: 21.0676
mpatch: 21.0676
```

a.

How to verify Release 26.0

1. Launch Eagle Browser and click File > About Eagle Browser
2. Look for the PCO Numbers (Your screen may not state Eagle N Series)



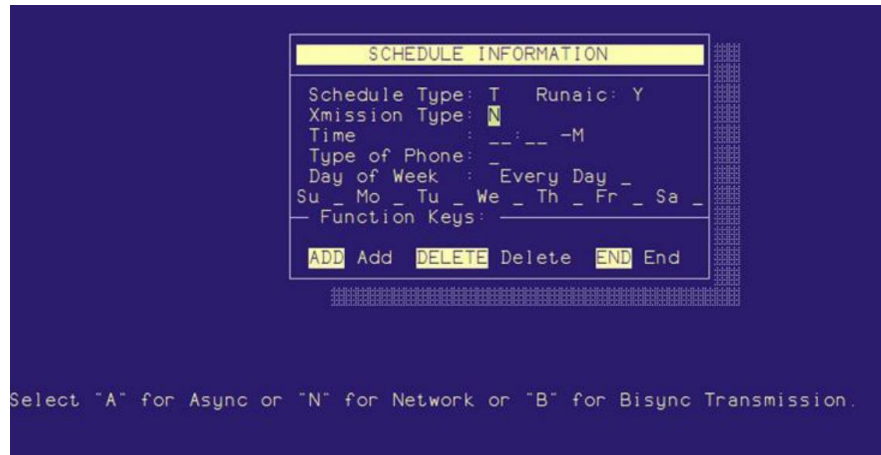
a.

How to verify Net Vista Bed Check

1. From the Eagle Browser, click System Management Menu. From the list that displays, click Schedule an End-of-Day Queue (SEQ). A window displays with scheduled queues.
2. Check your queue schedule and look for any of the following Queue Name's:
 - a. TRIDMT
 - b. TRIDM
 - c. TRIT
 - d. TRIMSE
 - e. TRIWD
 - f. TRIWDMNT

Load Seq	Queue Name	Schedule Name	Enable	Time	Day of Week	Day of Month	Month of Year
<input type="checkbox"/> 15	BUSADV	EOD	N	Unattended	Everyday		
<input type="checkbox"/> 16	BAPUR	TEST3	N	Unattended		End-of-Month	1,3,4
<input type="checkbox"/> 17	RANKINV	TEST124	N	Unattended		End-of-Month	1,3,4
<input type="checkbox"/> 18	TRIT	NEWTRIT	N	10:30 am	Everyday		
<input type="checkbox"/> 19	ROPTTEST	EOD	N	Unattended	Everyday		
<input type="checkbox"/> 20	TRIMSE	TRIMSE	N	5:30 am	Everyday		
<input type="checkbox"/> 21	TRIWD	TRIWD	N	1:00 am		1-5	1-12
<input type="checkbox"/> 22	TRIWDMNT	TRIWDMNT	N	5:30 am		15	1,4,7,10
<input type="checkbox"/> 23	TRIDM	TRIDM	N	12:00 pm	Sun,Mon,Tue,		
<input type="checkbox"/> 24	ANALDB	EOD	N	Unattended	Everyday		
<input type="checkbox"/> 25	AMCACHE	AFTERMAINT	N	After Mainte	Everyday		
<input type="checkbox"/> 26	TRIDMT	TRIDMT	N	9:00 am	Everyday		

- Go to Secure Access/Network Access and type SETMD. Check the Xmission Type and make sure the value is "N" for Network.



About Epicor

We're here for the hard-working businesses that keep the world turning. They're the companies who make, deliver, and sell the things we all need. They trust Epicor to help them do business better. Their industries are our industries, and we understand them better than anyone. By working hand-in-hand with our customers, we get to know their business almost as well as they do. Our innovative solution sets are carefully curated to fit their needs and built to respond flexibly to their fast-changing reality. We accelerate every customer's ambitions, whether to grow and transform, or simply become more productive and effective. That's what makes us the essential partners for the world's most essential businesses.

The contents of this document are for informational purposes only and are subject to change without notice. Epicor Software Corporation makes no guarantee, representations, or warranties with regard to the enclosed information and specifically disclaims, to the full extent of the law, any applicable implied warranties, such as fitness for a particular purpose, merchantability, satisfactory quality, or reasonable skill and care. This document and its contents, including the viewpoints, testimonials, dates, and functional content expressed herein are believed to be accurate as of its date of publication, June 2022. Use of Epicor products and services are subject to a master customer or similar agreement. Usage of the solution(s) described in this document with other Epicor software or third-party products may require the purchase of licenses for such other products. Epicor, the Epicor logo, and Eagle are trademarks or registered trademarks of Epicor Software Corporation in the United States, and in certain other countries and/or the EU. Copyright © 2022 Epicor Software Corporation. All rights reserved.