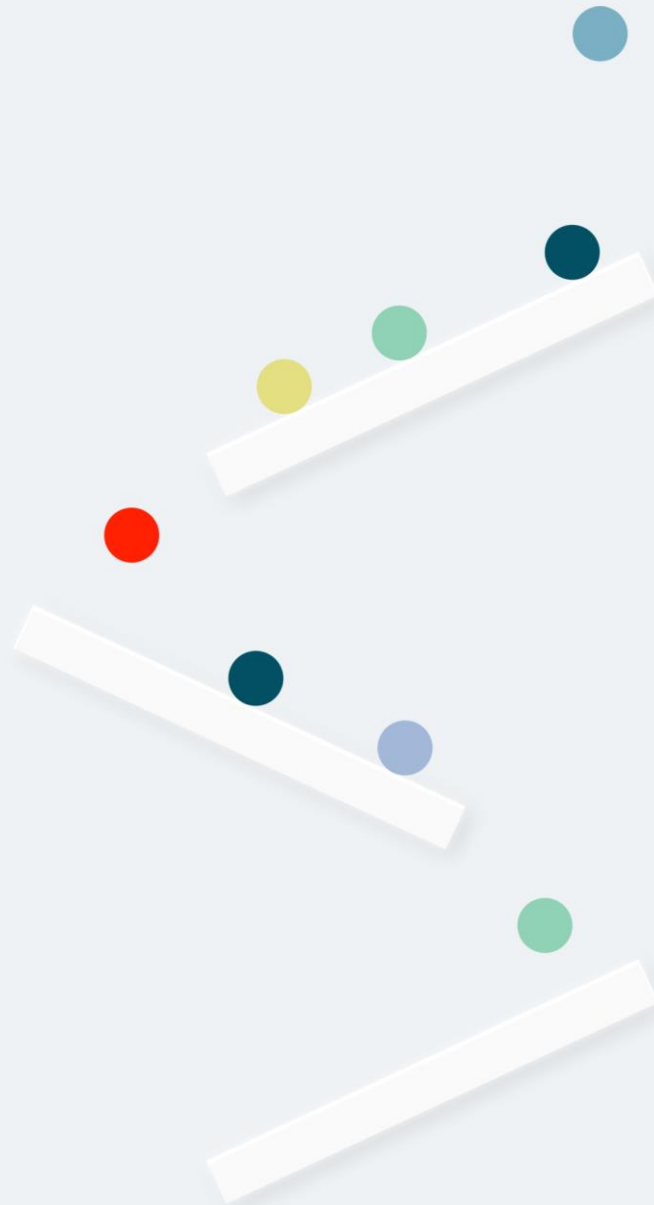


Eagle Software

Download Prerequisite

Check Instructions

Release 30.1



EPICOR

Eagle Software Download Prerequisite

Disclaimer

This document is for informational purposes only and is subject to change without notice. This document and its contents, including the viewpoints, dates and functional content expressed herein are believed to be accurate as of its date of publication. However, Epicor Software Corporation makes no guarantee, representations, or warranties with regard to the enclosed information and specifically disclaims any applicable implied warranties, such as fitness for a particular purpose, merchantability, satisfactory quality or reasonable skill and care. As each user of Epicor software is likely to be unique in their requirements in the use of such software and their business processes, users of this document are always advised to discuss the content of this document with their Epicor account manager. All information contained herein is subject to change without notice and changes to this document since printing and other important information about the software product are made or published in release notes, and you are urged to obtain the current release notes for the software product. We welcome user comments and reserve the right to revise this publication and/or make improvements or changes to the products or programs described in this publication at any time, without notice. The usage of any Epicor software shall be pursuant to an Epicor end user license agreement and the performance of any consulting services by Epicor personnel shall be pursuant to Epicor's standard services terms and conditions. Usage of the solution(s) described in this document with other Epicor software or third-party products may require the purchase of licenses for such other products. Where any software is expressed to be compliant with local laws or requirements in this document, such compliance is not a warranty and is based solely on Epicor's current understanding of such laws and requirements. All laws and requirements are subject to varying interpretations as well as to change and accordingly Epicor cannot guarantee that the software will be compliant and up to date with such changes. All statements of platform and product compatibility in this document shall be considered individually in relation to the products referred to in the relevant statement, i.e., where any Epicor software is stated to be compatible with one product and also stated to be compatible with another product, it should not be interpreted that such Epicor software is compatible with both of the products running at the same time on the same platform or environment. Additionally, platform or product compatibility may require the application of Epicor or third-party updates, patches and/or service packs and Epicor has no responsibility for compatibility issues which may be caused by updates, patches and/or service packs released by third parties after the date of publication of this document. Epicor is a registered trademark and/or trademark of Epicor Software Corporation in the United States, certain other countries and/or the EU. All other trademarks mentioned are the property of their respective owners. Copyright © Epicor Software Corporation 2021. All rights reserved. No part of this publication may be reproduced in any form without the prior written consent of Epicor Software Corporation

30.1

Revision: June 2021

Total pages: 5

Prerequisites

- ✓ [EOS3 \(Eagle Operating System 3\)](#)
- ✓ [Windows 7 Professional or Enterprise, 32bit or 64bit or higher](#)
Windows XP, Windows Vista, Windows Server 2003 and 2008 are not supported.
- ✓ [Eagle is on Release 26.0](#)
This includes client PCO 26.0856.046, 26.0856.110 and server 38.0937.029. Other client versions are suitable as long as they are compatible with 38.0937.029 server version. The About Eagle box in eBrowser contains this software version information.
- ✓ [Net Vista Bed Check](#) -- This is the automatic process to deliver patches and software update notices from the Epicor cloud. Although, you should probably already be set up for this, the initial ECD process checks to be sure. If for some reason it is not set up, Epicor will work with you to get this set up and working.
 - **Note:** If you are using dialup, ECD is not supported.
- ✓ [eConnect 3 or eConnect 4 is installed on each PC.](#)
- ✓ [ECD Overview Training for Eagle Software Download is complete.](#)
- ✓ [All client PC's must be turned on and connected to the network.](#)
- ✓ [Security bit 91 "Access to Osprey" – this bit is necessary to use function ECD which is run from OSPREY.](#)

How to verify EOS3

1. Open Secure Access or Network Access
2. Type PCO
3. **EOS3 – OS: 22.XXXX**

```
SYSTEM SOFTWARE PCO's
Programs: 39.0818.057
OS: 22.0782
eosbin: 22.0765
master: 22.0781
mpatch: 22.0781
```

a.

4. **EOS2 – 21.XXXX**

```
Show PCO Level

SYSTEM SOFTWARE PCO's
Programs: 39.0676.016
OS: 21.0671
eosbin: 21.0671
master: 21.0676
mpatch: 21.0676
```

a.

How to verify Release 26.0

1. Launch Eagle Browser and click File > About Eagle Browser
2. Look for the PCO Numbers (Your screen may not state Eagle N Series)



a.

How to verify Net Vista Bed Check

1. From the Eagle Browser, click System Management Menu. From the list that displays, click Schedule an End-of-Day Queue (SEQ). A window displays with scheduled queues.
2. Check your queue schedule and look for any of the following Queue Name's:
 - a. TRIDMT
 - b. TRIDM
 - c. TRIT
 - d. TRIMSE
 - e. TRIWD
 - f. TRIWDMNT

Load Seq	Queue Name	Schedule Name	Enable	Time	Day of Week	Day of Month	Month of Year
<input type="checkbox"/> 15	BUSADV	EOD	N	Unattended	Everyday		
<input type="checkbox"/> 16	BAPUR	TEST3	N	Unattended		End-of-Month	1,3,4
<input type="checkbox"/> 17	RANKINV	TEST124	N	Unattended		End-of-Month	1,3,4
<input type="checkbox"/> 18	TRIT	NEWTRIT	N	10:30 am	Everyday		
<input type="checkbox"/> 19	ROPTTEST	EOD	N	Unattended	Everyday		
<input type="checkbox"/> 20	TRIMSE	TRIMSE	N	5:30 am	Everyday		
<input type="checkbox"/> 21	TRIWD	TRIWD	N	1:00 am		1-5	1-12
<input type="checkbox"/> 22	TRIWDMNT	TRIWDMNT	N	5:30 am		15	1,4,7,10
<input type="checkbox"/> 23	TRIDM	TRIDM	N	12:00 pm	Sun,Mon,Tue,		
<input type="checkbox"/> 24	ANALDB	EOD	N	Unattended	Everyday		
<input type="checkbox"/> 25	AMCACHE	AFTERMAINT	N	After Mainte	Everyday		
<input type="checkbox"/> 26	TRIDMT	TRIDMT	N	9:00 am	Everyday		

g.

3. Go to Secure Access/Network Access and type SETMD. Check the Xmission Type and make sure the value is "N" for Network.



About Epicor

We're here for the hard-working businesses that keep the world turning. They're the companies who make, deliver, and sell the things we all need. They trust Epicor to help them do business better. Their industries are our industries, and we understand them better than anyone. By working hand-in-hand with our customers, we get to know their business almost as well as they do. Our innovative solution sets are carefully curated to fit their needs and built to respond flexibly to their fast-changing reality. We accelerate every customer's ambitions, whether to grow and transform, or simply become more productive and effective. That's what makes us the essential partners for the world's most essential businesses.