

Eagle for the Aftermarket Obtaining General Release Software

Eagle for the Aftermarket General Release software is available on an Epicor sftp site.

Before you begin you will need to know the EOS version of your Eagle server (see the appendix for instructions). You will need blank CDs. If your Eagle server is EOS3 you will also need blank DVDs for the server software. You will need a sftp client loaded on your PC.

1. **Connect to the sftp site.** Windows operating system does not natively support sftp. To connect to the site you will need an sftp client. There are several sftp clients available online, for example FileZilla or WinSCP. Once you have an sftp client installed onto your PC, connect to the Epicor sftp site using the following credentials:

The site is: sftp.epicor.com

The port is: 22

The user is: eftamcs

The password is: J1eF5z8n

NOTE examples of sftp client setup in the appendix.

2. **Download the correct software.** Change to the “Current General Release” folder. Download the, [What’s New Rel 26](#) the, [Auto Eagle Update Guide 26](#), and the entire [EOS2](#) or [EOS3](#) folder, based on which EOS your Eagle server has, to your PC.

The current general release is in the “Current General Release” folder. There are two folders, EOS2 and EOS3, which both contain the Eagle Client Software, Eagle Server Software (either EOS2 or EOS3 depending on which folder), Compass, LaserCat3 PEDS. The software is split out this way for simplicity.

NOTE for previous releases see the appendix.

3. **Burn media.** Burning from an .iso image means using software to create an install disc with the exact file set for an Eagle install. It is NOT copying the .iso file to the CD or DVD. Windows Disc Image Burner (which is native on Windows 7) can be used to burn the media. Burn the Eagle client software .iso and the Eagle EOS2 server software to CDs. Burn the Eagle EOS3 server software to a DVD. The EOS3 server software is too big to fit on a CD, so it has to be put on a DVD.

NOTE example of using windows disc image burner in the appendix.

4. **Label Media.** Since each disc is specific for the client or server it is best practice to label them with **server** or **client**, **software level**, and **date stamp** from the sftp site.

5. **Verify Media.** It is best practice to verify the integrity and readability of the server disc once it’s created. Insert the CD or DVD into your Eagle server and use the **OSPREY** Utility: **CDCHECK**.

Please contact Customer Support if you have any questions.

Appendix.

Determining which version of EOS is installed on an Eagle Server.

Run the OSPREY utility PCO. EOS2 is OS 21 and will show an OS: 21.#### in PCO, EOS3 is OS 22 and will show an OS: 22.#### in PCO.

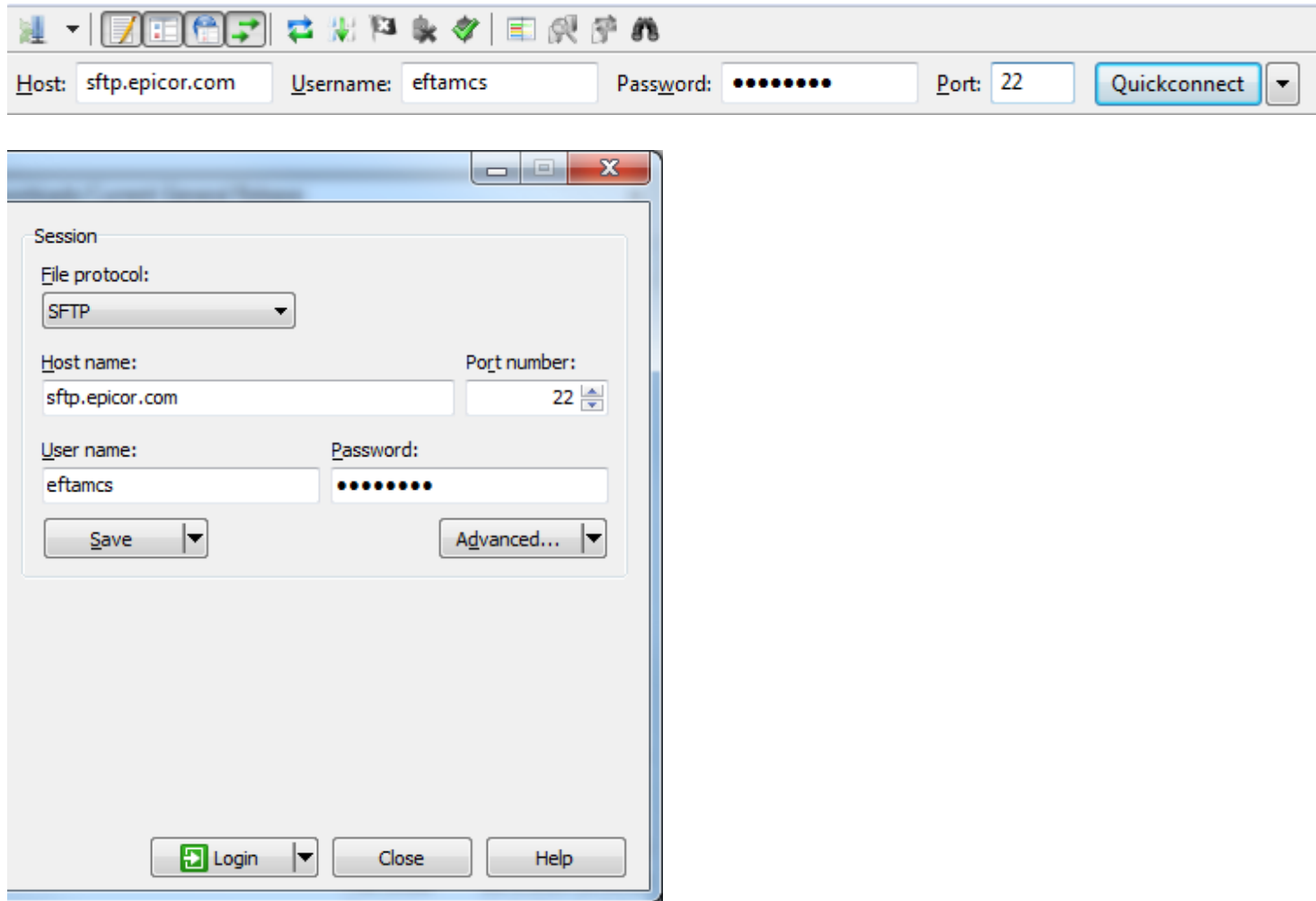
EOS2

```
Show PCO Level
SYSTEM SOFTWARE PCO's
  Programs: 33.2305.078
  OS: 21.0559
    eosbin: 21.0553
    master: 21.0560
    mpatch: 21.0560
SOFTWARE PACKAGES
  Eagle FAX Release 3.05
SOFTWARE PATCHES
```

EOS3

```
Show PCO Level
SYSTEM SOFTWARE PCO's
  Programs: 33.2305.078
  OS: 22.0365
    eosbin: 22.0313
    master: 22.0346
    mpatch: 22.0346
SOFTWARE PACKAGES
  Eagle Credit Authorization 4.1
SOFTWARE PATCHES
```

Example of the setup to connect to the sftp site using a sftp client



Current General Release folder on the sftp site

Remote site: /downloads/Current General Release

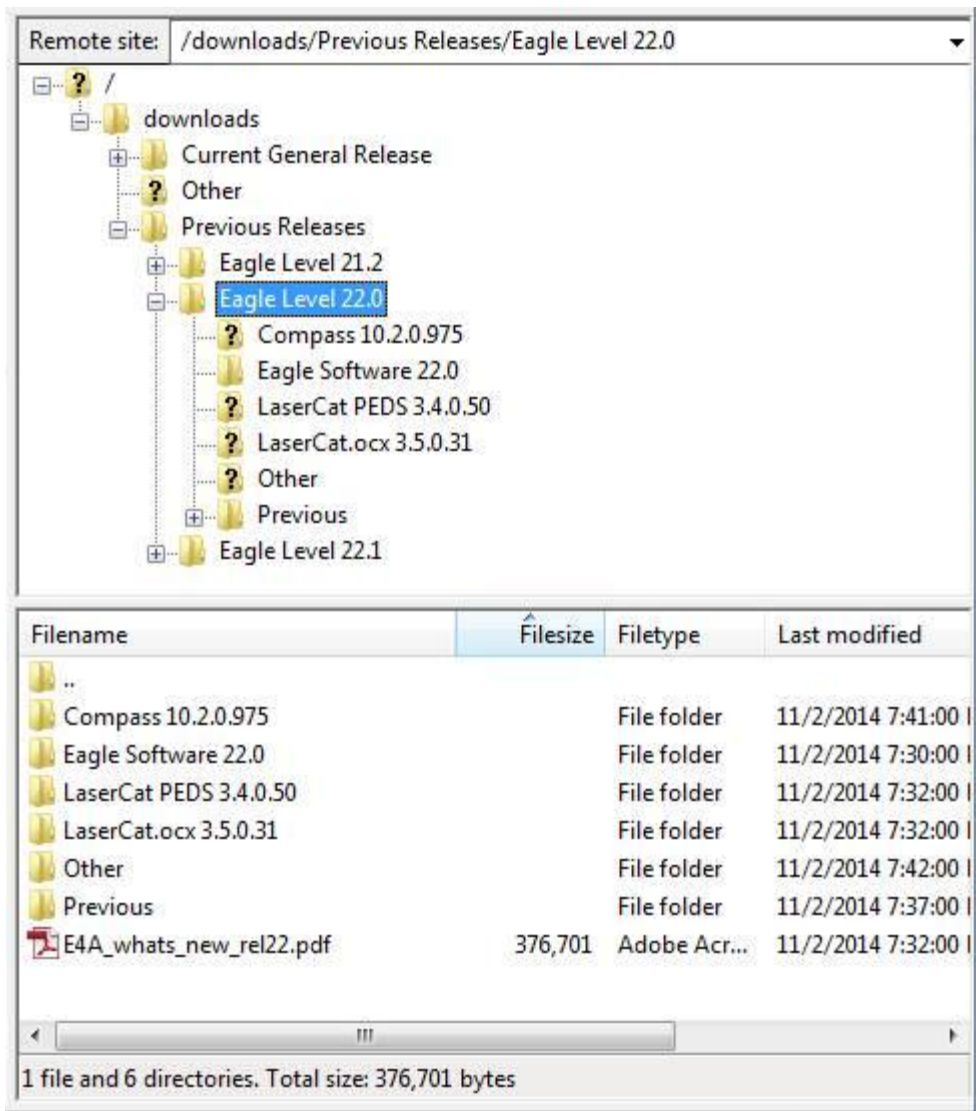
The screenshot shows a directory tree for the SFTP site. The root is '/'. Underneath is a folder named 'downloads'. Inside 'downloads' is the folder 'Current General Release', which is highlighted. Under 'Current General Release' are several sub-folders: 'eConnect 3.352.1', 'EOS2', 'EOS3', and 'Other'. Each of these sub-folders contains three files: 'Compass 14.0.0.1880', 'Eagle Software L26', and 'LaserCat PEDS 3.4.1.83'. Below the tree is a table listing the files and folders in the current directory.

Filename	Filesize	Filetype	Last modified
..			
eConnect 3.352.1		File folder	2/21/2017 4:39:04 PM
EOS2		File folder	2/21/2017 3:41:43 PM
EOS3		File folder	10/7/2016 10:42:19 AM
Other		File folder	2/15/2017 11:10:45 AM
500-20013 Whats New Rel 26.pdf	1,284,897	Adobe Acr...	1/13/2017 5:24:10 PM

Previous Releases

The most recent releases are uploaded to the “Previous Releases” folder.

The previous releases are not broken out by OS Level , both EOS2 and EOS3 software are in the “Eagle Software (version number)” folder. Download only the server software that matches the OS on the Eagle server.



The screenshot shows a remote file explorer window with the address bar set to `/downloads/Previous Releases/Eagle Level 22.0`. The left pane displays a tree view of the directory structure:

- downloads
 - Current General Release
 - Other
 - Previous Releases
 - Eagle Level 21.2
 - Eagle Level 22.0** (highlighted)
 - Compass 10.2.0.975
 - Eagle Software 22.0
 - LaserCat PEDS 3.4.0.50
 - LaserCat.ocx 3.5.0.31
 - Other
 - Previous
 - Eagle Level 22.1

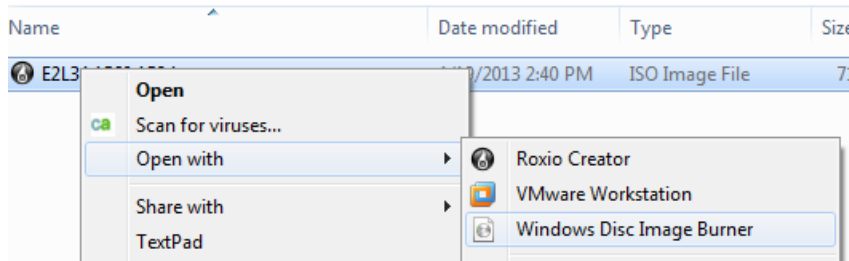
The right pane shows a table of files and folders:

Filename	Filesize	Filetype	Last modified
..			
Compass 10.2.0.975		File folder	11/2/2014 7:41:00 I
Eagle Software 22.0		File folder	11/2/2014 7:30:00 I
LaserCat PEDS 3.4.0.50		File folder	11/2/2014 7:32:00 I
LaserCat.ocx 3.5.0.31		File folder	11/2/2014 7:32:00 I
Other		File folder	11/2/2014 7:42:00 I
Previous		File folder	11/2/2014 7:37:00 I
E4A_whats_new_rel22.pdf	376,701	Adobe Acr...	11/2/2014 7:32:00 I

At the bottom, a status bar indicates: 1 file and 6 directories. Total size: 376,701 bytes

Windows disc image burner

Right click on the .iso file and then click open with then windows Disc Image Burner



Put the media in the drive and click the “Burn” button.

