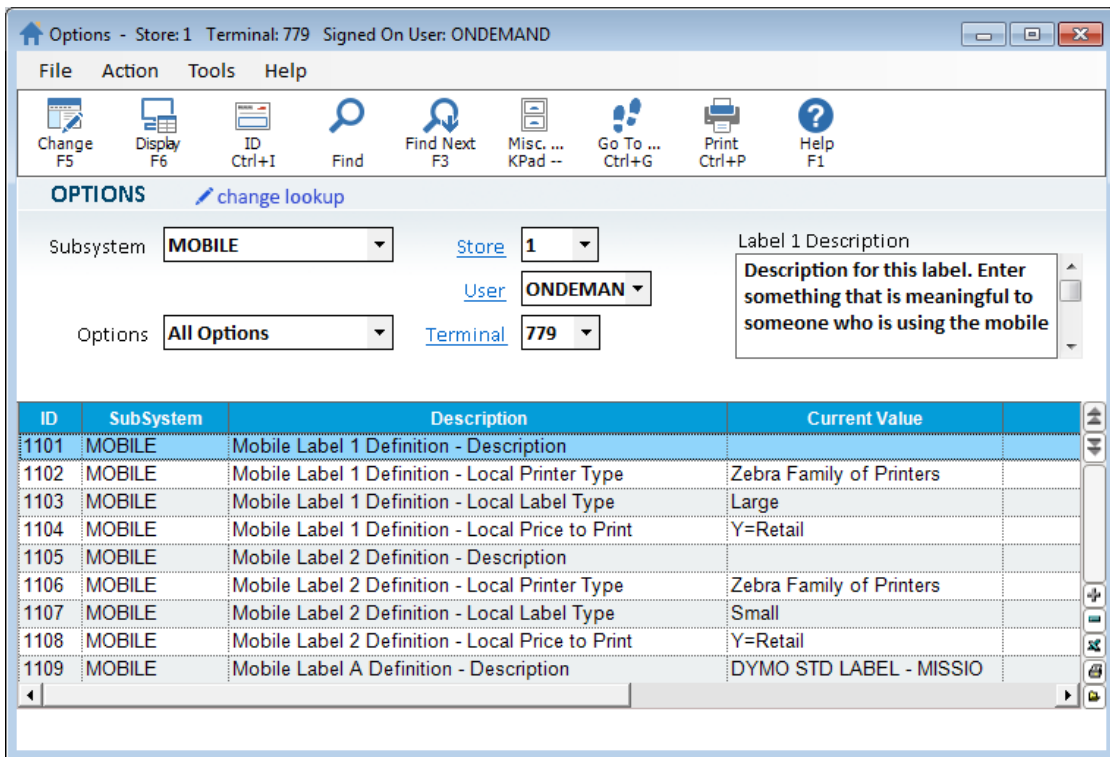


## Eagle Mobile Options and Security

Eagle Mobile+ honors many of the same options you have configured as defaults for Eagle Mobile Inventory on the RF. To review these, select 'Mobile' as the Subsystem and 'All Options' on the Options Configuration screen.

Remember that the choices you make here can be modified for a specific session using the gear/settings section of each application.

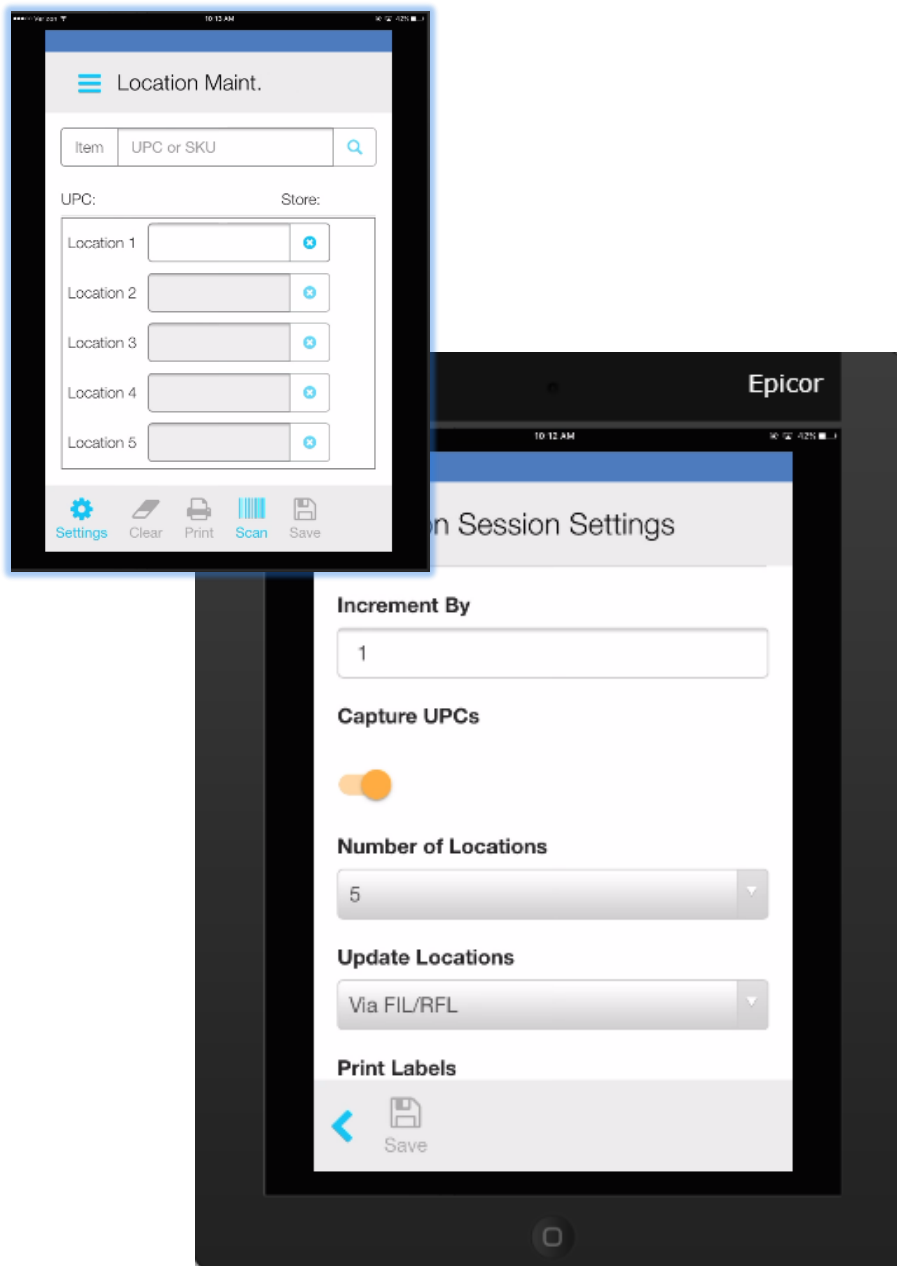


Eagle Mobile+ looks specifically at these options:

| ID   | SubSystem | Description                      | Current Value                                    | Edit? |
|------|-----------|----------------------------------|--|-------|
| 1100 | MOBILE    | Eagle Mobile Inventory on System | Yes  | Pwd   |
| 1026 | INVENTORY | Inventory On System              | 3=Full (standard purchasing) - Inventory II Plus | Pwd   |

Location Maintenance has a gear icon to manage settings. These are set by default from Eagle Options but you may choose to override them when managing by exception.

For example, if your default setting for Update Locations is set to 'Via FIL/RFL' then you will notice only the first location field is editable. Changing this setting to 'Direct to IMU' will allow the user to change the value of all visible locations.



Assigning security bits to employees who will be using Eagle Mobile is another important step in setting up Eagle Mobile access, since they determine what capabilities each employee has.

For instance, employees who have security bit 868 can access Inventory Maintenance, but won't be able to update items unless they have 869 assigned as well. Security bits 870 and 871 allow employees to change cost and retail price respectively.

As you can see, it's important to carefully consider what type of access each employee needs in order to complete job-related tasks without putting your business data at risk. Therefore make sure your review these security bits:

| Number | Sub System | Program | Capability   |
|--------|------------|---------|--|
| 862    | INVENTORY  | RF      | Mobile Inventory: Access/Update Mobile Location Assistant    |
| 863    | INVENTORY  | RF      | Mobile Inventory: Access/Update Mobile Physical Inventory    |
| 864    | INVENTORY  | RF      | Mobile Inventory: Access Mobile Print Label                  |
| 868    | INVENTORY  | RF      | Mobile Inventory: Access Mobile Inventory                    |
| 869    | INVENTORY  | RF      | Mobile Inventory: Update Mobile Inventory                    |
| 870    | INVENTORY  | RF      | Mobile Inventory: Allow Mobile Inventory Display/Change Cost |
| 871    | INVENTORY  | RF      | Mobile Inventory: Allow Mobile Inventory Change Retail Price |
| 887    | INVENTORY  | PIP     | Change/Delete physical inventory counts for other users      |
| 908    | POS        | RF      | Mobile Inventory: Access/Update Shipment Verification        |
| 925    | SECURITY   | RF      | Mobile Inventory: Access/Update session options              |
| 930    | INVENTORY  | RF      | Mobile Inventory: Access Inventory Price Check Screen        |

The contents of this document are for informational purposes only and are subject to change without notice. Epicor Software Corporation makes no guarantee, representations or warranties with regard to the enclosed information and specifically disclaims, to the full extent of the law, any applicable implied warranties, such as fitness for a particular purpose, merchantability, satisfactory quality or reasonable skill and care. This document and its contents, including the viewpoints, dates and functional content expressed herein are believed to be accurate as of its date of publication. The usage of any Epicor software shall be pursuant to the applicable end user license agreement and the performance of any consulting services by Epicor personnel shall be pursuant to applicable standard services terms and conditions. Usage of the solution(s) described in this document with other Epicor software or third party products may require the purchase of licenses for such other products. Epicor, the Epicor logo, and are trademarks of Epicor Software Corporation, registered in the United States and other countries. All other marks are owned by their respective owners. Copyright © 2016 Epicor Software Corporation. All rights reserved.

---

## About Epicor

Epicor Software Corporation drives business growth. We provide flexible, industry-specific software that is designed around the needs of our manufacturing, distribution, retail, and service industry customers. More than 40 years of experience with our customers' unique business processes and operational requirements is built into every solution—in the cloud, hosted, or on premises. With a deep understanding of your industry, Epicor solutions spur growth while managing complexity. The result is powerful solutions that free your resources so you can grow your business. For more information, [connect with Epicor](#) or visit [www.epicor.com](http://www.epicor.com).



### Corporate Office

804 Las Cimas Parkway  
Austin, TX 78746  
USA

Toll Free: +1.888.448.2636  
Direct: +1.512.328.2300  
Fax: +1.512.278.5590

### Latin America and Caribbean

Bldv. Antonio L. Rodriguez #1882 Int.104  
Plaza Central, Col. Santa Maria  
Monterrey, Nuevo Leon, CP 64650  
Mexico

Phone: +52.81.1551.7100  
Fax: +52.81.1551.7117

### Europe, Middle East and Africa

No. 1 The Arena  
Downshire Way  
Bracknell, Berkshire RG12 1PU  
United Kingdom

Phone: +44.1344.468468  
Fax: +44.1344.468010

### Asia

238A Thomson Road #23-06  
Novena Square Tower A  
Singapore 307684  
Singapore

Phone: +65.6333.8121  
Fax: +65.6333.8131

### Australia and New Zealand

Suite 2 Level 8,  
100 Pacific Highway  
North Sydney, NSW 2060  
Australia

Phone: +61.2.9927.6200  
Fax: +61.2.9927.6298