

# Epicor Compass Install Guide

Document EL2207

This manual contains reference information about software products from Epicor Software Corporation.™

The software described in this manual and the manual itself are furnished under the terms and conditions of a license agreement. The software consists of software options that are separately licensed. It is against the law to copy the software on any medium, or to enable any software options, except as specifically permitted under the license agreement. In addition, no part of this manual may be copied or transmitted in any form or by any means without the prior written permission of Epicor Software Corporation.

From time to time, Epicor makes changes to its software products. Therefore, information in this manual is subject to change, and the illustrations and screens that appear in the manual may differ somewhat from the version of the software provided to you.

Created by  
Professional Services Team

Copyright: © 2016 Epicor Software Corporation. All rights reserved.

Epicor Software Corporation, the Epicor logo, and Epicor Eagle are trademarks of Epicor Software Corporation. All other trademarks are property of their respective owners.

Epicor Software Corporation  
4120 Dublin Blvd  
Dublin, CA 94568

Document No. EL2207-07  
Publication Date: August 2016

# Table of Contents

- Preparing for Installation .....1
- Upgrading the Compass Clients .....2
- Testing the Software ..... 11
- Updating Settings ..... 12
- Getting Further Support ..... 13
- Notes ..... 14

# Preparing for Installation

## Who Should Use This Document

Use this document if you want to **upgrade** your current version of Epicor Compass software to the latest version (**version 4.1 or higher**). If this is a new installation (not an upgrade), please contact Epicor support (the Advice Line) to arrange for a representative (an Epicor LPS) to perform tasks for a new installation and software setup.

## Requirements

Compass version 4.1 (or higher) requires Eagle for Windows level 19 (or higher) on both the Compass and the Eagle Servers. This applies for both types of server set ups: Compass and Eagle Servers on the same system or on separate systems.

## Client vs. Server Preparation

You will complete the Compass upgrades in this guide on **Compass Client PCs only**. You **must** upgrade the Eagle Server with the most current Eagle software **before** you begin to upgrade Compass Clients.

When you upgrade the first Compass Client, the database (views) on the Compass Server updates automatically. The Compass Server profiles are also advanced when you upgrade the first Compass Client. It is important to make sure the upgrade on the first client has finished and all settings are correct before moving on to other clients. This ensures that two clients do not attempt to update the server at the same time.

**Tips for Later:** When you upgrade your Eagle software on your Eagle Server, it is a good time to also upgrade the Compass Server software. If the Compass Server is separate from the Eagle Server, you will need to upgrade the Compass Server separately. If you have the Compass Server software on the same server as Eagle, then you will only have to complete the upgrade on the one server.

## Support During Installation

If you have questions before or during the installation process, the Advice Line is available to help with the Compass installation. When contacting the Advice Line, be sure to have the following information handy:

- Your customer number, store name, and your name
- The business application you are using (Eagle for Windows, etc.)
- The Compass version number (from the Menu bar, click Help, then select About)
- Description of the problem, including any error messages
- Then, call **800-322-3077**. You can also log a support ticket online through EpicCare at: <https://epicorcs.service-now.com/epiccare/>

On the customer website, in the Type of Issue field, be sure to select “Eagle Compass.”

## Duration of Installation

You may install Compass upgrades during business hours because it will not affect Eagle while it is running. The upgrade affects Compass software only. There is no need to quiet the server or go into Offline POS during the upgrade process.

After you install the software on the first Compass Client PC, the other Compass Clients will no longer be able to access Compass until you upgrade them to the latest version of Compass.

The installation process could take 20 minutes or more to complete depending on where the Compass Server is located. Installation on the first Compass Client should take less than 20 minutes if it is in the same location (store) as the Compass Server. Each additional client will take about 10 minutes. Epicor recommends the first Compass Client to be in the same location (store) as the Compass Server. If the Compass Server is in another location, the installation could take longer, possibly an hour, because of remote access.

## Before You Install the Upgrade

### IMPORTANT

Before you complete the procedures in the next section, you should always back up the Compass Server. Use the same back up procedures for the Compass Server as you would for Eagle. Refer to the Eagle online help or printed documentation for backup procedures. If your Compass Server and Eagle Server are on separate systems, you can back up the Compass Server while the Eagle and its daily functions are still active. If the Compass Server and Eagle Server are on the same system, you must quiet the system.

## Upgrading the Compass Clients

During the installation process, you will do the following:

- On the **first** Compass Client, download the new software from the Compass Client Installation CD or from an installation link on the installation website.
- Install the software on the first Compass Client (when you upgrade the first Compass Client, the database on the Compass Server also updates).
- Test the software.
- Install the software on all other clients.
- Update settings.

To upgrade the first Compass Client, use the following procedure:

1. Stop the Eagle Listener and all Eagle for Windows applications.
2. On the **first** Compass Client PC, click the Start menu, then click the following menus: Start > Epicor > Epicor Compass > Utilities and open Set Hosts. The Host Configuration window displays.

**Host Configuration**

Hosts | Host Details | Email | Scheduler

Enter the IP Address or Host Name of your servers.

Eagle System Host:

Profile Repository Host:

Data Warehouse Host:

3. Make a note of the three server IP addresses. Yours will be different than the ones displayed in the above example. You may need these addresses later during the installation. Although the Compass Client should keep these addresses, it is a good idea to keep them handy.
4. Shut down all software that is running. For example, any antivirus software, business applications, etc.
5. Put the Compass Installation CD in the CD drive OR launch your Internet browser to download the software from the installation website. If you are installing Compass from the installation website, proceed with step 6.
6. If you are installing Compass from a CD, verify that you have the correct version of Compass. Once the CD loads, locate the file **setupeagle.exe** and double-click to start the installation. Skip to step 11.
7. On your Internet browser, click the URL address box, then type **http://www.activant.com/eagle-customer-support/compass/**. Once you launch the installation site, the following window displays.

**Download the Latest Compass Software**

To download the latest Compass software, enter your current Eagle software level, and click download.

Eagle Software Level

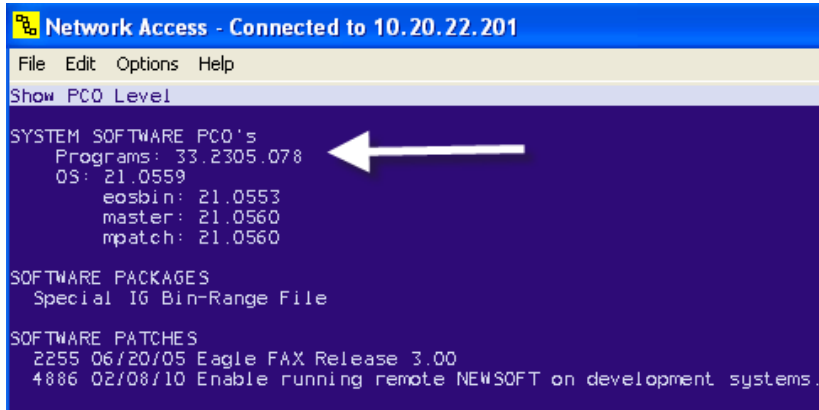
**Important**

If you have a separate Compass server, then before installing new Compass software, you **MUST** verify that the Compass server and the Eagle server's software levels are exactly the same, and that the Compass server is getting good backups.

- If the software levels are the same, but you do not have a good backup of the Compass server, perform a backup before installing the new Compass software.
- If the software levels are **NOT** the same, do the following:
  1. back up the Compass server
  2. update the Compass server with the software CD you used to update the Eagle server
  3. update the Compass client software on one PC only
  4. When the installation on that one PC is complete, update the other PCs

If you have ANY questions about this process, place a service request to the compass group on the Advice Line **BEFORE** you begin the installation.

8. Enter your current Eagle server software level, and click Download. Note: You **MUST enter the software level of your Eagle Server, NOT the software level of Eagle for Windows**. To obtain the current Eagle server software level, click Utilities from the Eagle Browser, and select OSPREY. From OSPREY, at "Selection," type PCO, and press Enter. At "Programs," the current Eagle server software level displays.



```
Network Access - Connected to 10.20.22.201
File Edit Options Help
Show PCO Level
SYSTEM SOFTWARE PCO's
Programs: 33.2305.078
OS: 21.0559
eosbin: 21.0553
master: 21.0560
mpatch: 21.0560
SOFTWARE PACKAGES
Special IG Bin-Range File
SOFTWARE PATCHES
2255 06/20/05 Eagle FAX Release 3.00
4886 02/08/10 Enable running remote NEWSOFT on development systems.
```

9. On the next screen, click Yes to continue with the download.

### Download the Latest Epicor Compass Analytics™ Software

You are about to download Epicor Eagle Compass 14.0.1405, which is compatible with Eagle server level

**Note:** If you receive a 'Microsoft C++ Runtime' error during the install, you should install .NET 2.0 Runtime directly from the following Microsoft web site:

<http://www.microsoft.com/downloads/details.aspx?FamilyID=0856EACB-4362-4B0D-8EDD-AAB15C5E04F5&displaylang=en>

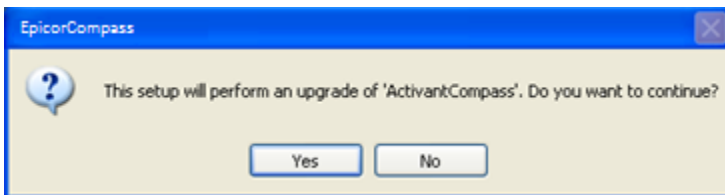
10. Click Save to download the executable setup (setupeagle.exe) file. The file is large and will take a several minutes to download.



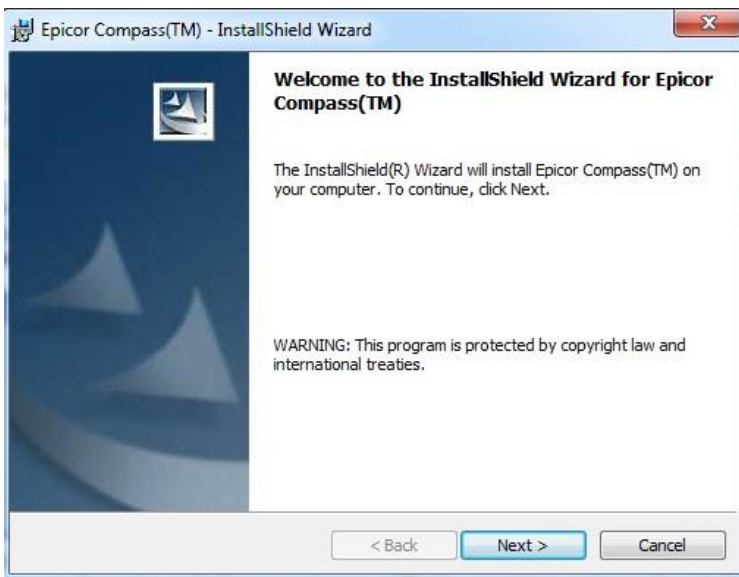
11. Once the download of the installation program from the website is complete, double-click the file **setupeagle.exe** or, if available, click Open/Run. A security window may display.



12. If a security window displays, click Run. The Upgrade Verification window may display.



13. If the Upgrade Verification window (as shown above) displays, click Yes. The InstallShield Wizard window displays.

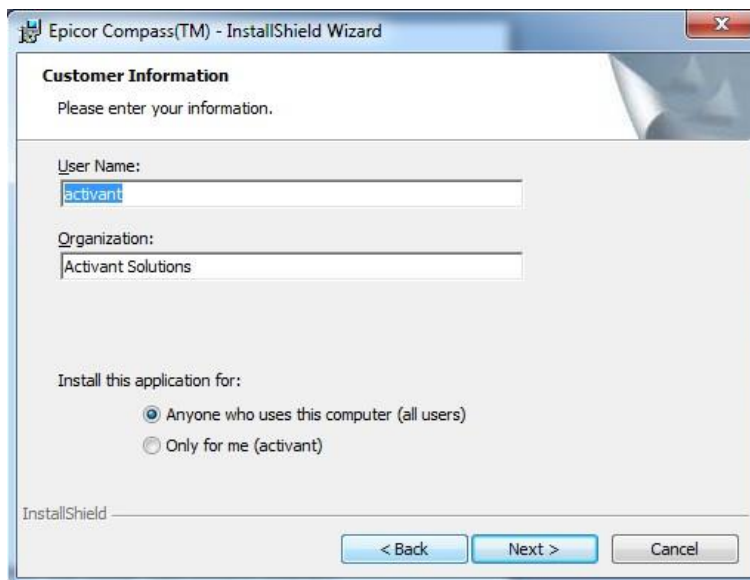




14. Click Next. The License Agreement window displays.

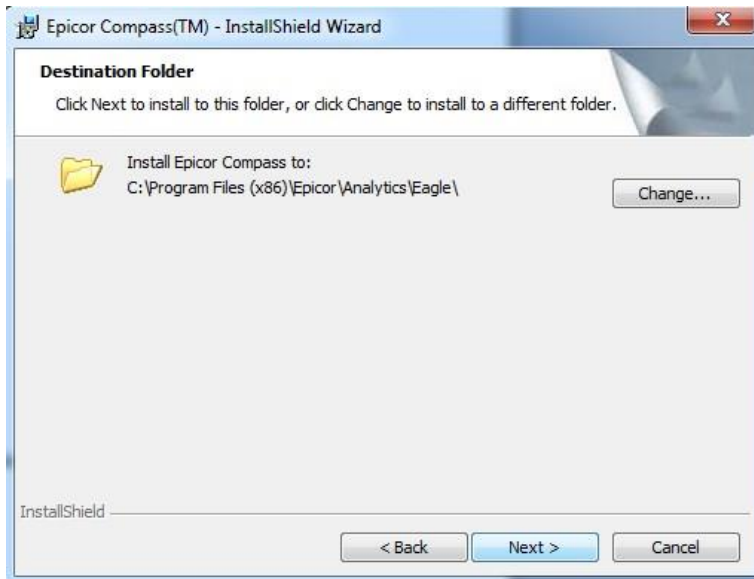


15. Accept the terms, then click Next. The Customer Information window displays.

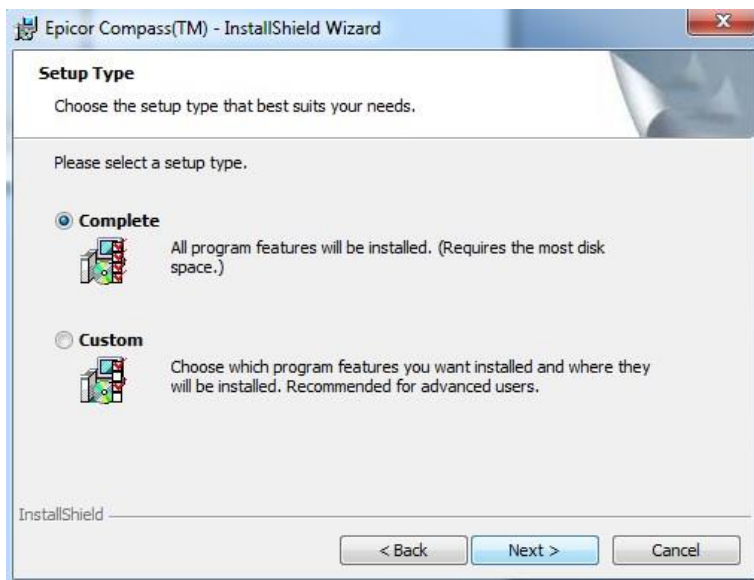


16. In the User Name and Organization fields, type the user name and organization. Then, select the option for Anyone Who Uses This Computer.

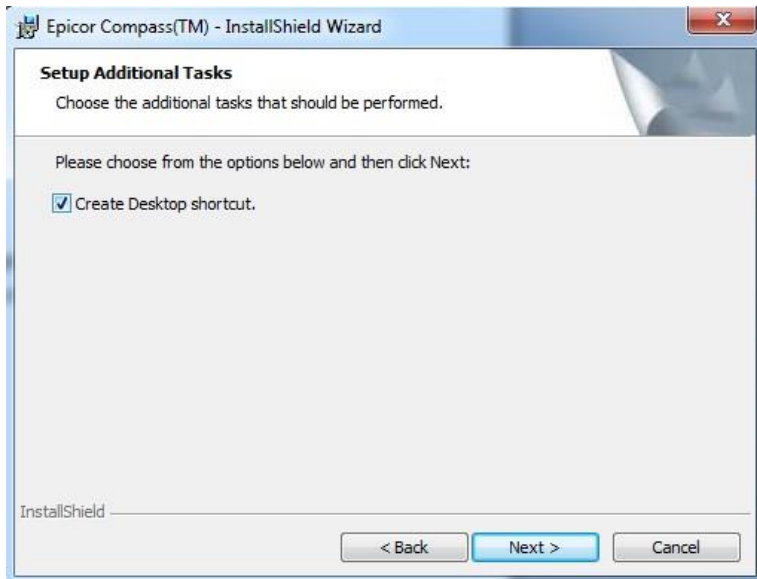
17. Click Next. The Destination Folder window displays.



18. **DO NOT** make changes to the destination folder. Click Next. The Setup Type window displays.

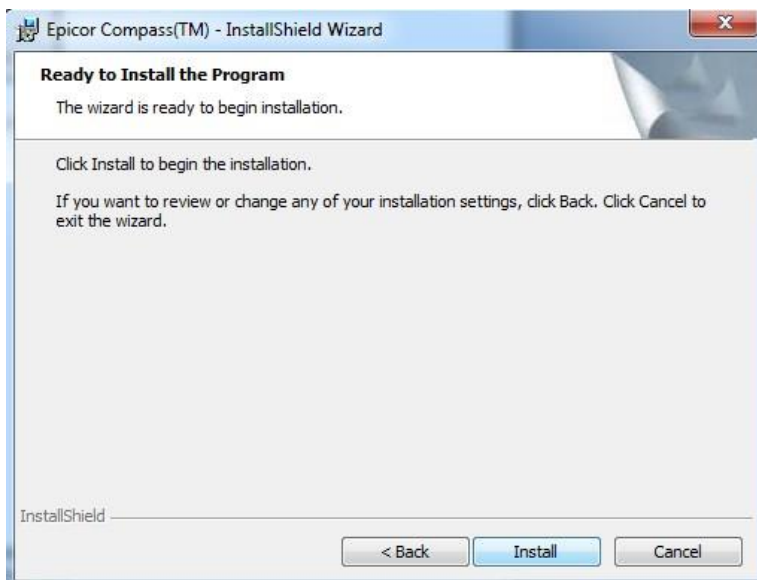


19. Select Complete, then click Next. The Additional Tasks window displays.

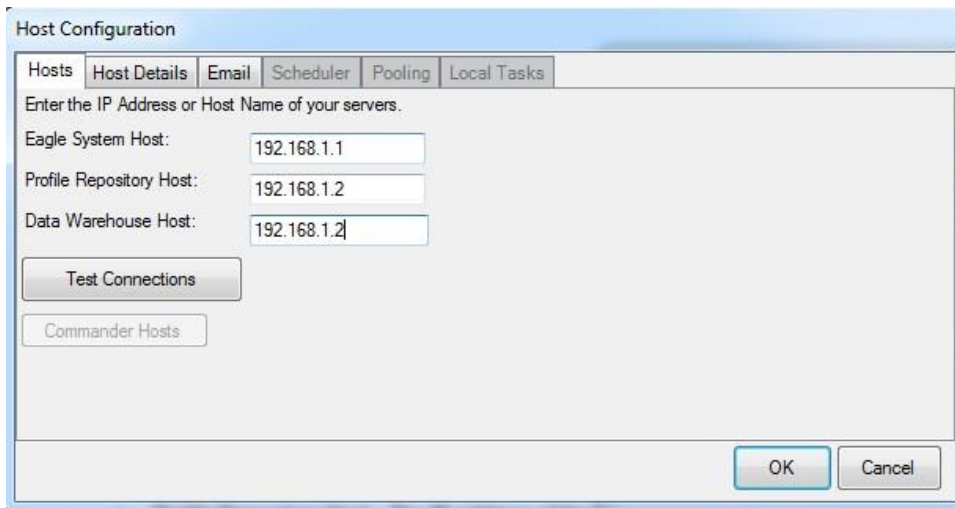


image

20. If you would like to create a desktop shortcut, select the checkbox, then click Next. The Install window displays.



21. Click Install. The installation begins. This may take several minutes to complete. When the installation is complete, the Host Configuration window displays.



22. Check the addresses in the Host fields to make sure they match the addresses you noted earlier in step 2.

- Eagle System Host – The IP address of the Eagle server.
- Profile Repository Host – The IP address of the Compass database server.
- Data Warehouse Host – The IP address of the Compass database server.

**Note:** If the Compass Server and Eagle Server are on the same system, all three of the IP addresses above will be the same.

**Tips for Later:** You can change addresses later from the Start menu by selecting the following menus: Start > Programs > Epicor > Epicor Compass > Utilities > Set Hosts.

23. Click Test Connections to test the connectivity to the server.

24. When information displays that the test is successful, click OK. If the test is not successful, check the IP addresses again or contact Epicor to get the correct addresses.

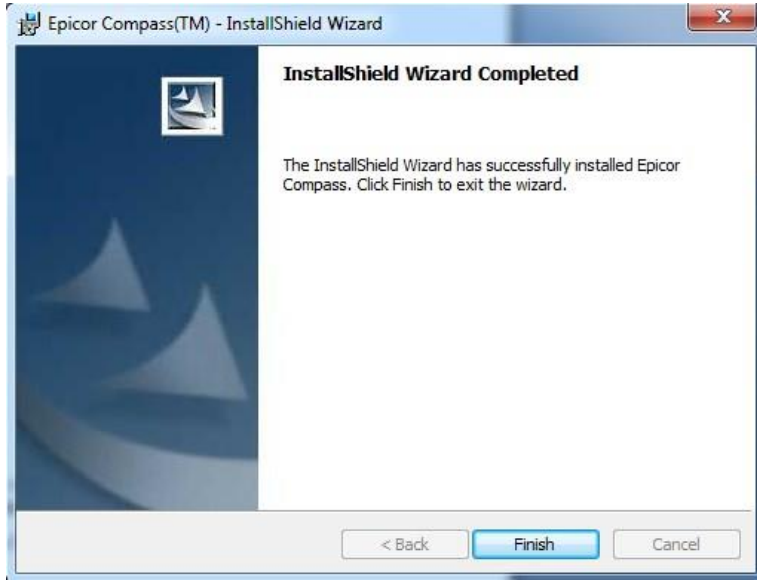
The client connects to the server to check the profiles. If the profiles are outdated and need to be advanced, the Advance Profiles window displays.

25. If an Advance Profiles window displays, click Yes. The process to advance profiles takes about 10 minutes to complete.

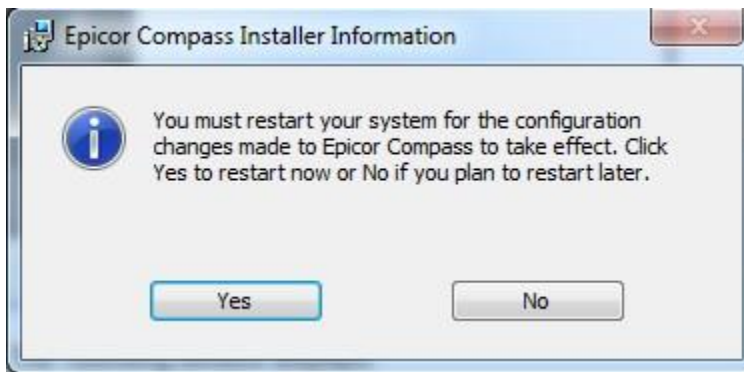
**Note:** As stated earlier in this guide, it is recommended that the first Compass Client be in the same location (store) as the Compass Server to avoid having to complete a remote connection. If the Compass Server is in another location, the process to advance the profiles may take one hour or more to complete.

Updating the profiles is only done once by the first client where you install the upgrade. If there are other clients that access Compass, you do not have to upgrade the profiles on them. After you upgrade the profiles on the first client, other Compass Clients on lower versions of Compass can no longer access the Compass Server until they are upgraded with the new version of Compass software.

26. Once the profiles have advanced (if needed), the Install Completion window displays.



27. Click Finish. The following window displays.



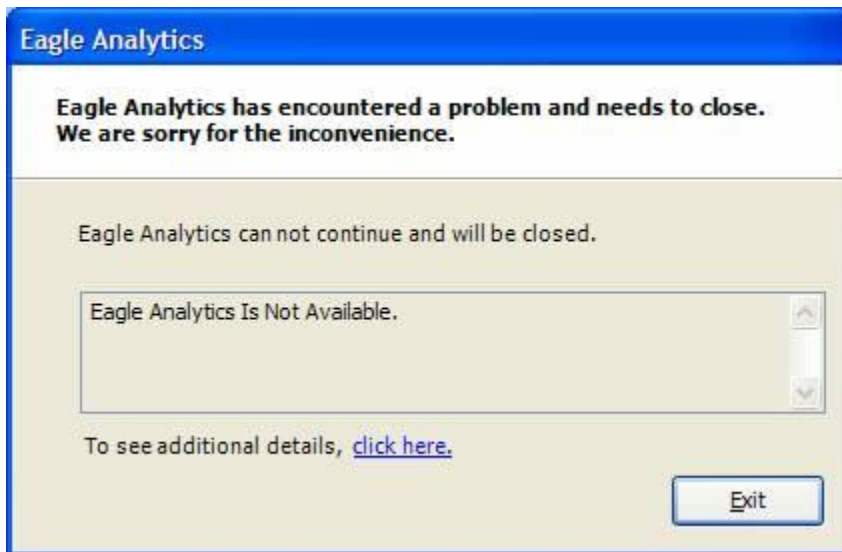
28. Click Yes to restart the client PC now or No to restart the client later. You must restart the client before you start Compass for the first time after the upgrade.

29. It is important to continue to the next section "Testing the Software."

## Testing the Software

1. Click the Start menu then click the following menus: Programs > Epicor > Epicor Compass. The Compass Welcome window displays.

If the following window displays instead of the Welcome window, it means that there is an issue with user security. Sign off the user completely and then sign on the user again. If error messages continue to display, contact Epicor.

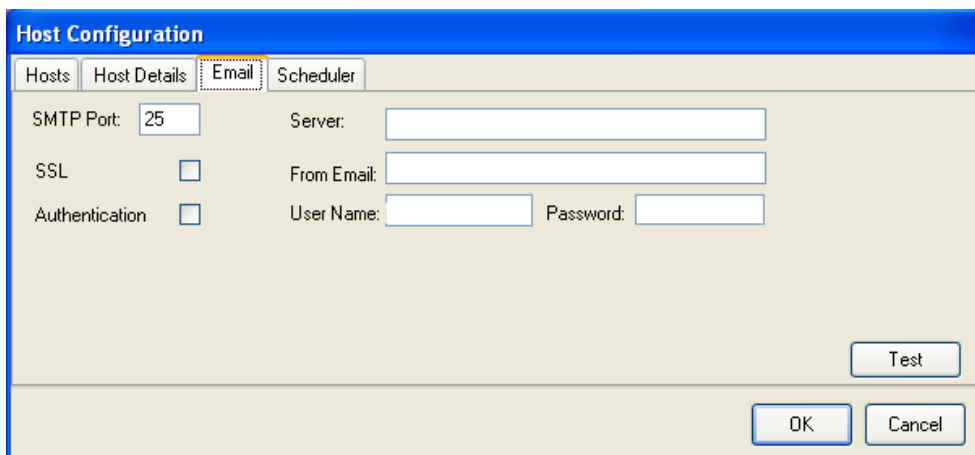


2. When the Compass software starts successfully on the first Compass Client, repeat the entire installation procedure for each additional Compass Client.
3. After you upgrade each Compass Client, it is a good idea to select and run a report of your choice and check the results to make sure the software is updated and working properly.

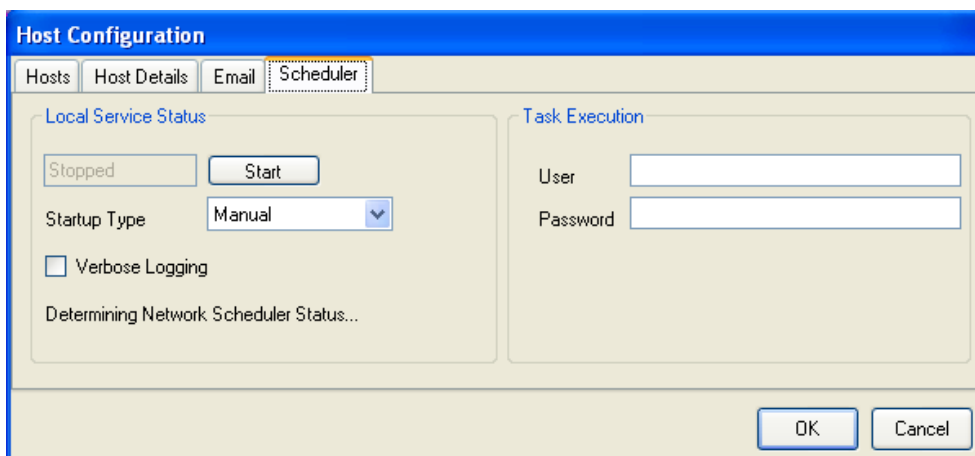
## Updating Settings

After upgrading, you will need to check and update the settings for the Email and Scheduler on the Compass Client that you designate as the Compass scheduler. This ensures that all automatically delivered reports will be delivered. You find the Email and Scheduler settings in the tabs on the Host Configuration window in Compass. This window allows you to schedule tasks to run then email the results to specific recipients. The Scheduler tab requires a user login and password.

To access this window, click the Start menu, then click the following menus: Epicor > Epicor Compass > Utilities. For more information on setting up scheduled tasks and emails, refer to the Compass Online Help System.



The screenshot shows the 'Host Configuration' dialog box with the 'Email' tab selected. The 'SMTP Port' is set to 25. There are input fields for 'Server', 'From Email', 'User Name', and 'Password'. Checkboxes for 'SSL' and 'Authentication' are present and unchecked. A 'Test' button is located at the bottom right of the configuration area. 'OK' and 'Cancel' buttons are at the bottom of the dialog.



The screenshot shows the 'Host Configuration' dialog box with the 'Scheduler' tab selected. It is divided into two sections: 'Local Service Status' and 'Task Execution'. In 'Local Service Status', the service is 'Stopped', with a 'Start' button and a 'Startup Type' dropdown set to 'Manual'. There is an unchecked checkbox for 'Verbose Logging' and a status indicator 'Determining Network Scheduler Status...'. In 'Task Execution', there are input fields for 'User' and 'Password'. 'OK' and 'Cancel' buttons are at the bottom of the dialog.

# Getting Further Support

## Compass Online Help System

For instructions on setting up and using the features in Compass, access the Compass online help system. If you would like more information on the new features in the latest version, be sure to review the "What's New" help topic in the Compass Online Help System.

## Training

To learn more about the Compass application, Epicor offers the following resources:

- **Eagle Training Browser**—From the Eagle Browser, click the Training link to access the Training Browser. Click the "App Map" link to see what training materials are available for the Compass application.

You can also check the web version of the Training Browser. This version of the Training Browser is on the Epicor web site and includes the most recently released training materials. To access the web version, go to [www.epicor.com](http://www.epicor.com) and select Eagle from the Customer Login drop-down list. From the Epicor Eagle Customer page, click the link for Learning Solutions, and then click the link for Eagle Training Browser.

- **eLearning Solutions**—Browse the eLearning Solutions pages on the Epicor web site to find any eLearning classes that are available for Compass. To get there, go to [www.epicor.com](http://www.epicor.com) and select Eagle from the Customer Login drop-down list. From the Epicor Eagle Customer page, click the link for Learning Solutions.
- **Professional Services**—The Professional Services organization is available to provide customized training for the Compass application and help you create custom Compass queries. To learn more, contact Epicor Direct at (800) 538-8597.





---

## About Epicor

Epicor Software Corporation drives business growth. We provide flexible, industry-specific software that is designed around the needs of our manufacturing, distribution, retail, and service industry customers. More than 40 years of experience with our customers' unique business processes and operational requirements is built into every solution—in the cloud, hosted, or on premises. With a deep understanding of your industry, Epicor solutions spur growth while managing complexity. The result is powerful solutions that free your resources so you can grow your business. For more information, [connect with Epicor](#) or visit [www.epicor.com](http://www.epicor.com).



### Corporate Office

804 Las Cimas Parkway  
Austin, TX 78746

USA

Toll Free: +1.888.448.2636

Direct: +1.512.328.2300

Fax: +1.512.278.5590

### Latin America and Caribbean

Blvd. Antonio L. Rodriguez #1882 Int. 104

Plaza Central, Col. Santa Maria

Monterrey, Nuevo Leon, CP 64650

Mexico

Phone: +52.81.1551.7100

Fax: +52.81.1551.7117

### Europe, Middle East and Africa

No. 1 The Arena

Downshire Way

Bracknell, Berkshire RG12 1PU

United Kingdom

Phone: +44.1344.468468

Fax: +44.1344.468010

### Asia

238A Thomson Road #23-06

Novena Square Tower A

Singapore 307684

Singapore

Phone: +65.6333.8121

Fax: +65.6333.8131

### Australia and New Zealand

Suite 2 Level 8,

100 Pacific Highway

North Sydney, NSW 2060

Australia

Phone: +61.2.9927.6200

Fax: +61.2.9927.6298