

The following Options and Security bits should be reviewed prior to generating Labels and Signs.

Options ID # 5824, 'Label Manager - Prompt user to delete label batches after <Import>'. You can choose to be prompted to delete the batch file after printing it.

Enter Prompt to delete batch

Prompt to delete batch

Y	Ask and defaults to Yes
N	Do not ask
X	Ask and defaults to No

This option applies when using the <Import> button of Label Manager to print one or more label batches, or to import one or more label batches into the Label Manager grid. Once that action has occurred, this option determines if the user is prompted to delete the batches and if so, how the prompt's answer should default.

Set to N to not be prompted to delete the label batches.
Set to Y to be prompted to delete the label batches with the answer defaulted to Yes.
Set to X to be prompted to delete the label batches with the answer defaulted to No.

Kept By System (can be changed)

OK
Cancel

Options ID# 7320, 'Days to Keep Label Manager batch files'. Those with a 'date created' value older than this number of days will be automatically purged.

Enter Days Label Manager batch

Days Label Manager batch

Enter the minimum number of days to keep Label Manager batch files. A Label Manager batch file will be deleted if its Date Created is older than the number of days specified in this option.

Note: These files are in the /u1/RQ/LABELS/XFR directory.

Kept By System

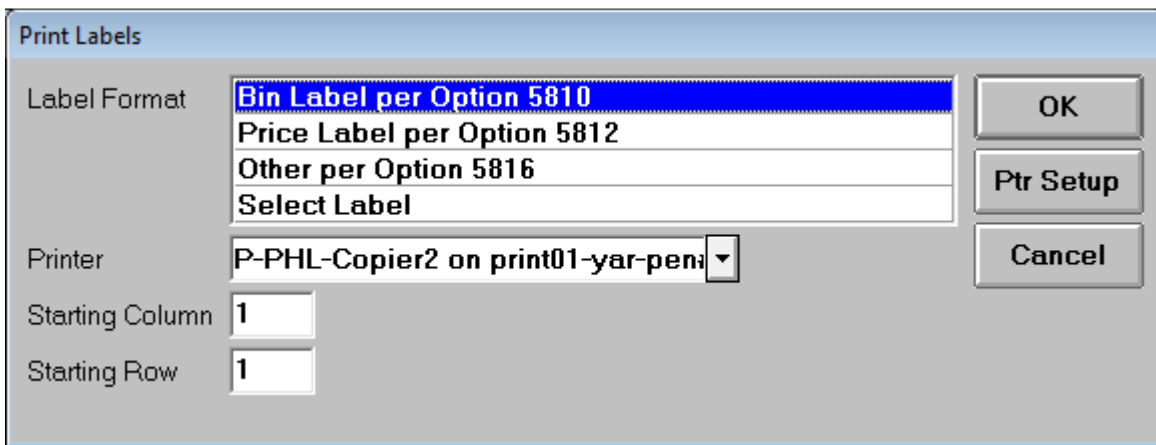
OK
Cancel



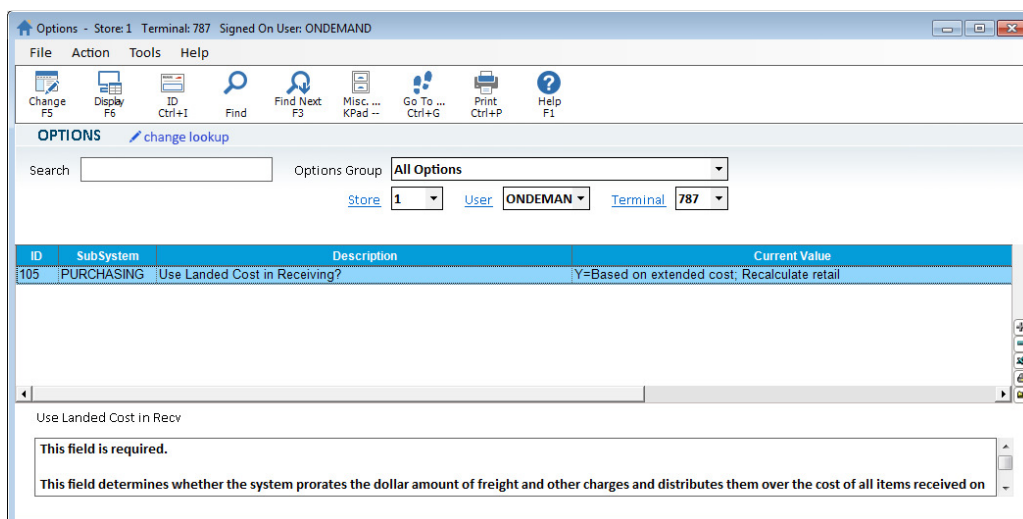
Options ID# 5810, 'Default bin label format used for Windows label printing'. Use an existing template or create your own label and select a default here.

Options ID# 5812, 'Default price label format used for Windows label printing'. Use an existing template or create your own label and select a default here.

Options ID# 5816, 'Default 'other' price label format used for Windows label printing'. Use an existing template or create your own label and select a default here.



Options ID# 105, 'Use Landed Cost in receiving?' This must be set to 'X' or 'Y' for price change records to be calculated when RRP is run with option P or Q and S. See the Help document titled, '**Update Prices**'.



Security Bits

Sub System	Program	Capability	Authorized	Number	Legacy Program
INVENTORY	REPORTS	Allow item bin label report	Yes	270	RBL
INVENTORY	REPORTS	Allow item price label report	Yes	292	RLA
INVENTORY		Allow vendor mailing labels report	Yes	301	RVL
A/R		Allow A/R customer mailing labels report	Yes	382	RML
PAYROLL	RPEB	Allow payroll employee alphabetic label report	Yes	487	RPEB
SYSTEM	IMU	Windows Label Manager Access	Yes	633	
SYSTEM	IMU	Windows Label Designer Access	Yes	634	
INVENTORY		Access Bin Label Change Viewer (VIEWIB)	Yes	703	
POS	LABELS	Access POS\Order Entry Flex-Labels Designer	Yes	719	
SPECIAL		(MO) Ability to select from multiple promotion codes	Yes	765	
INVENTORY	RF	Mobile Inventory: Access Mobile Print Label	Yes	864	
INVENTORY		Ability to generate 'restricted use' UPCs in Maintain UPC Codes	Yes	1,062	
INVENTORY	IMU	Add/Change/Delete IMU Code labels and values	Yes	1,108	
INVENTORY	MVR	Add/Change/Delete MVR Code labels and values	Yes	1,109	
A/R	MCR	Add/Change/Delete MCR Code labels and values	Yes	1,110	
INVENTORY	LISTS	Ability to access Label Item Lists	Yes	1,114	